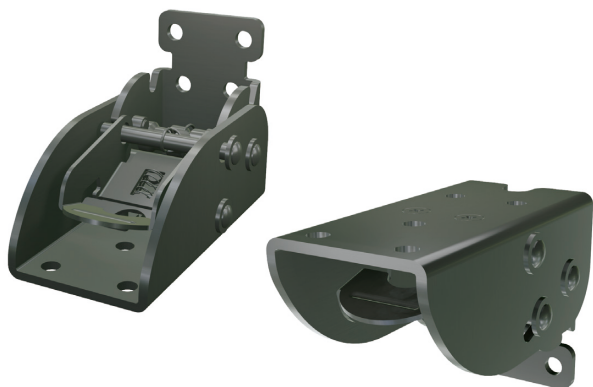
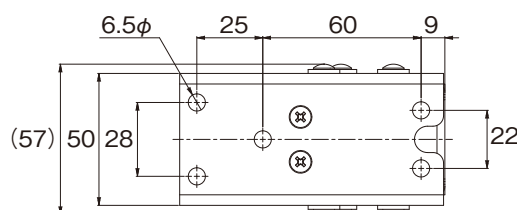


B213 Metal Fitting to fold legs PAT.P

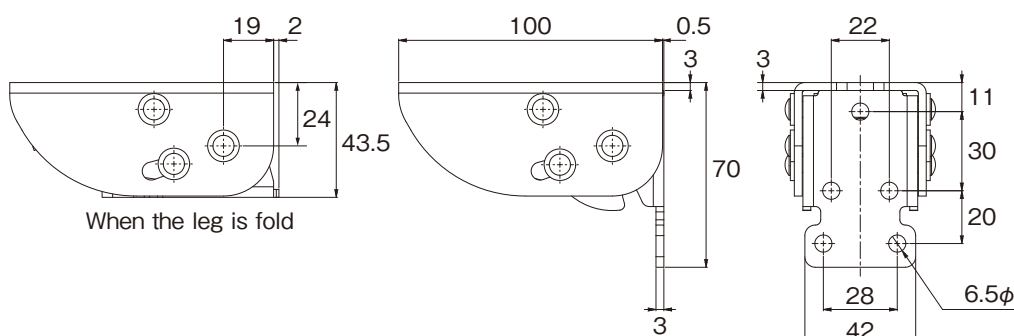


It'll be on sale in Spring 2024

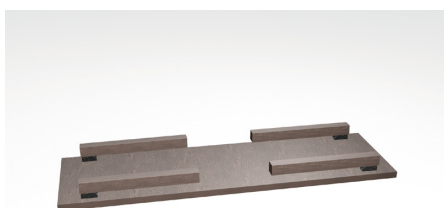
- Metal fitting to fold and lock table legs one by one.
- Available to operate easily by handling a lever.
- When you use or stock a table, legs can be locked.
- Unlocking state is kept by memory function, if you push the locking release lever when opening and closing the legs. Safety design to avoid finger pinch because by not putting your hand on when opening and closing by this function.
- Installing on a plate, it is unnecessary to engrave on a table top or a leg.
- Finishing/Black baked paint
- Finishing/steel
- Recommended screws/ $\phi 6.0$, pan, truss



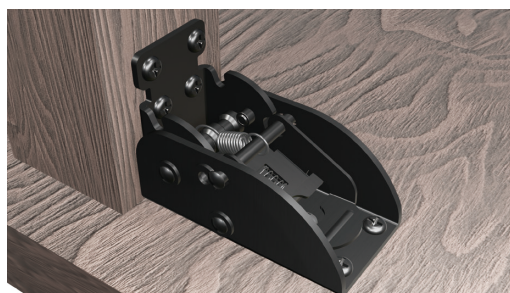
OPEN HOLD **CLOSE HOLD** **Height up to 700mm**



When the leg is fold



When it is locked by a lever



When it is unlocked by a lever

Kojima METAL FITTING CORPORATION

Head office

3-4-1 Motoasakusa, Taito-ku, Tokyo 111-0041, Japan

TEL +81-3-3843-3141 FAX +81-3-3843-3144

Kasukabe branch

1-26-20 Kasukabehigashi, Kasukabe-shi, Saitama 344-0062, Japan

TEL +81-48-760-3881 FAX +81-48-760-3883

✉ kanamono@kojima-mf.co.jp

