

KOJIMA

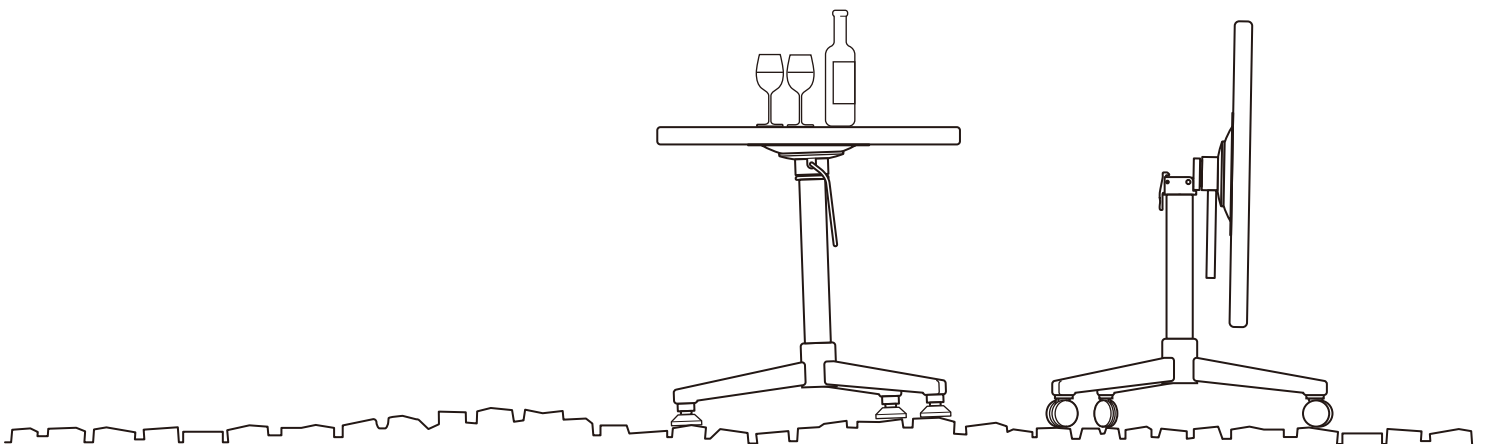
B135

LEVELER PAT



LEVELER

- Proposal of new table system.
- Easy one step operation for leveling.
- Using casters makes moving quite easy.



Proposal of new table system.

"B135 LEVELER" is a metal fitting which can level the table top easily only by operating the lever. It is possible to keep leveling the table top easily even on the uneven floor such as stone paving using highly safety 3 legs.

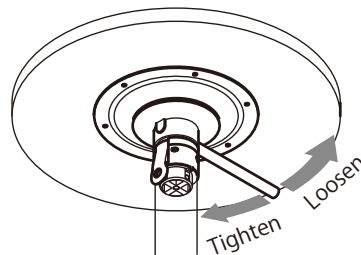
Foldable Type has a hinge to storage compactly by folding the table top.



* It also adjusts to $\phi 76$ pipe by using "Spacer/B135SP" sold separately.

■ How to operate inclination of the table top.

1. Loosen by turning the lever
2. Level the table top
3. Tighten by turning the lever in the opposite direction



■ How to fold the table top <Foldable type>



Put up the fastener



Lean the table top



Completed



*Operate the fastener by one hand holding the table top by the other hand.

Foldable Wire Handle

B135-LVR-W

B135-LVR-W-SUS

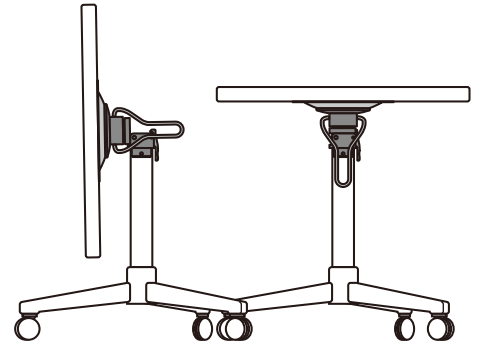
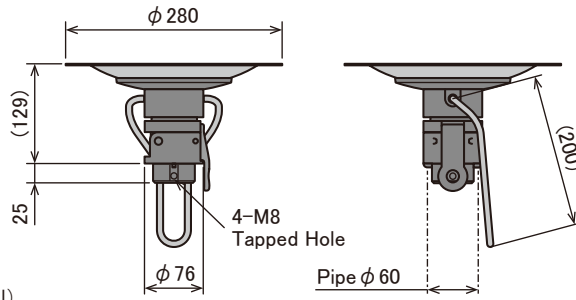
Material

MainParts : ADC

TableTopBracket :

Chrome plated steel board
or SUS304

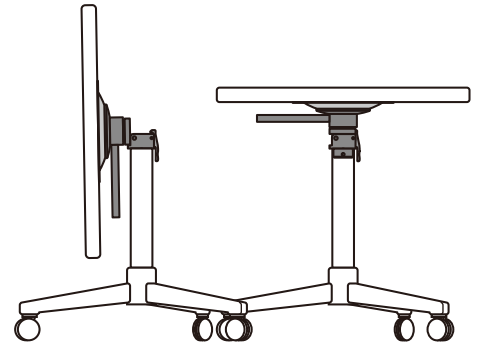
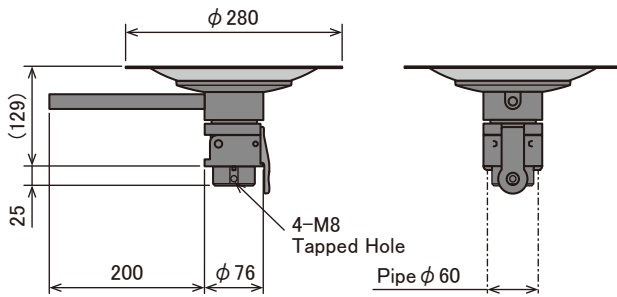
(All below are the same material)



Foldable Bar Handle

B135-LVR-B

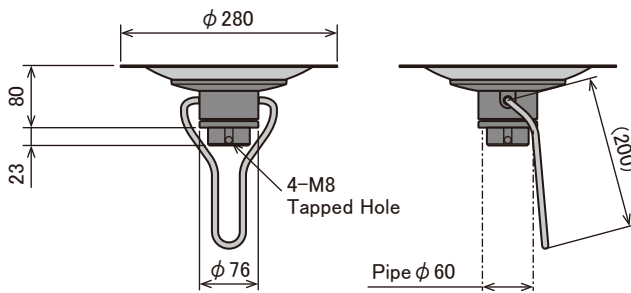
B135-LVR-B-SUS



Fixed Wire Handle

B135-LVN-W

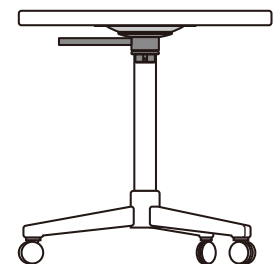
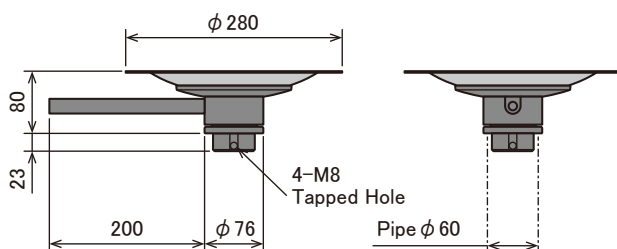
B135-LVN-W-SUS



Fixed Bar Handle

B135-LVN-B

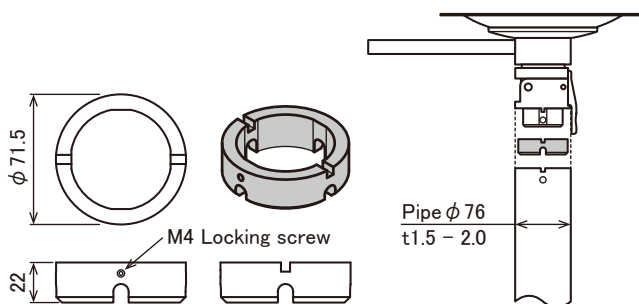
B135-LVN-B-SUS



Optional Parts

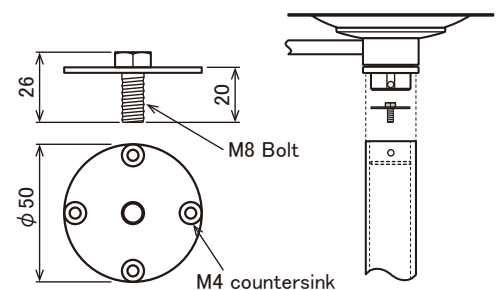
Spacer
B135-SP

Use in case assemble 76 outer diameter pipes



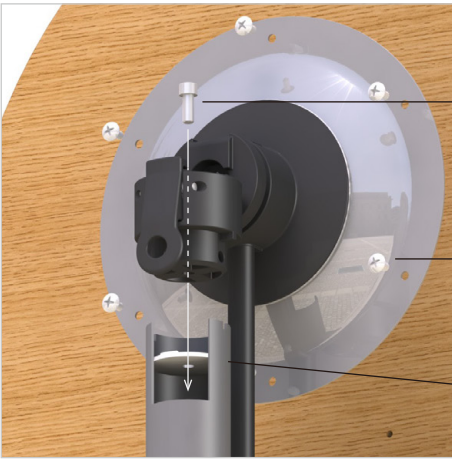
Joint Bolt <for Fixed type>
B135-JB

This is a metal fitting which you install the fixed type easily. Please don't hesitate to ask us in detail.



Outline for assembly

Foldable Type - A system



- Fixing Bolt for Pipe
M8 × 1pcs
- Tapping Screw Type A
M6 × 6pcs
- M8 Tapped Plate
(Weld inside the pipe)

Foldable Type - B system



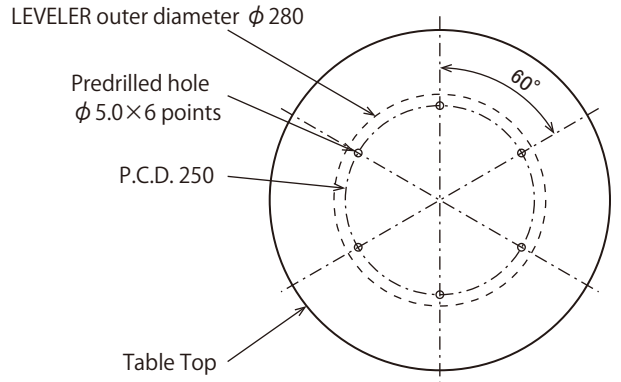
- Tapping Screw Type A
M6 × 6pcs
- Fixing Bolt for Pipe
M8 × 2 - 4pcs

Fixed Type



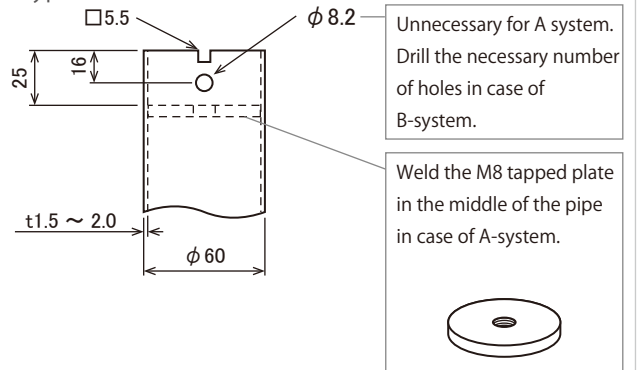
- Tapping Screw Type A
M6 × 6pcs
- Fixing Bolt for Pipe
M8 × 1pc
- Joint Bolt
&
Countersunk Head Screw
M4 × 10mm × 4 pcs
- M8 Tapped Plate
(Weld inside the pipe)

Machining drawing for Table Top

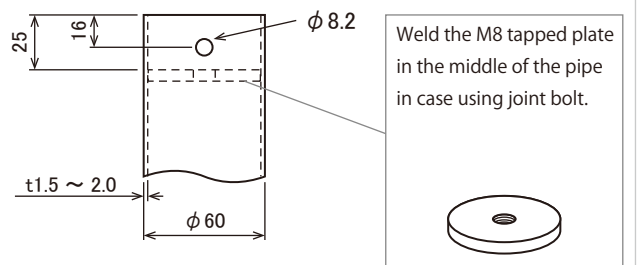


Machining drawing for Pipe

Foldable Type



Fixed Type



Use 2 to 4 fixing bolts if not using these parts.

Please refer to the separate volume "Delivery Specification" about shapes of each part and mounting dimensions and others.

Kojima
METAL FITTING CORPORATION

KOJIMA IS A CORPORATION
THAT OFFERS INNOVATIVE
PRODUCTS THAT PROVIDES
HIGH ECONOMY AND QUALITY.

Head office 3-4-1 Motoasakusa, Taito-ku, Tokyo 111-0041, Japan
TEL +81-3-3843-3141 FAX +81-3-3843-3144

Kasukabe branch 1-26-20 Kasukabehigashi, Kasukabe-shi, Saitama 344-0062, Japan
TEL +81-48-760-3881 FAX +81-48-760-3883

✉ kojima_global@kojima-mf.co.jp



www.kojima-mt.co.jp

