

# B213 Folding legs metal fitting PAT.P



- Metal fitting to fold and lock table legs one by one.
- Available to operate easily by handling a lever.
- When you use or stock a table, legs can be locked.
- Unlocking state is kept by memory function, if you push the locking release lever when opening and closing the legs.

Safety design to avoid finger pinch because by not putting your hand on when opening and closing by this function.

- Installing on a plate, it is unnecessary to engrave on a table top or a leg.

Caution: When you unlock by the lever, there is a risk of injury because a leg falls suddenly, so be sure to start to operate the lever keeping your hand on the leg.

- Finishing/Black baked paint ● Material/steel
- Recommended screws/  $\phi 5.0$ , pan, truss
- Quantity: 40 pcs
- Recommended table top size: width is up to 900mm, length is up to 1,800mm
- Recommended leg thickness: 60~75mm square

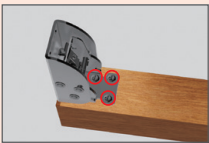
## Caution!!

Please put about 0.1mm gap between table and leg. Installing without any gap, lock system doesn't work when you stand a leg.



About 0.1mm gap

1

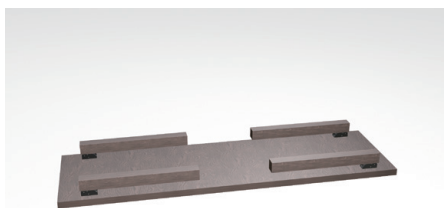
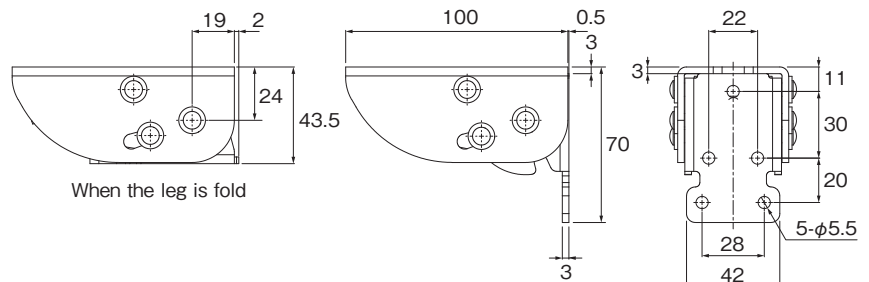
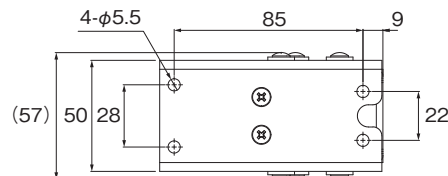


Install a leg to B213 on a flat place

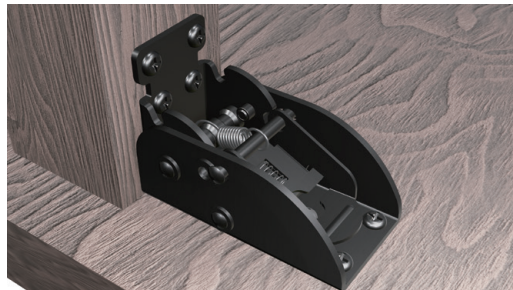
2



Fix the red circle part with a screw in the folded state



When it is locked by a lever



When it is unlocked by a lever

**Kojima** METAL FITTING CORPORATION

Head office

3-4-1 Motoasakusa, Taito-ku, Tokyo 111-0041, Japan

TEL +81-3-3843-3141 FAX +81-3-3843-3144

Kasukabe branch

1-26-20 Kasukabehigashi, Kasukabe-shi, Saitama 344-0062, Japan

TEL +81-48-760-3881 FAX +81-48-760-3883

✉ [kojima\\_global@kojima-mf.co.jp](mailto:kojima_global@kojima-mf.co.jp)

