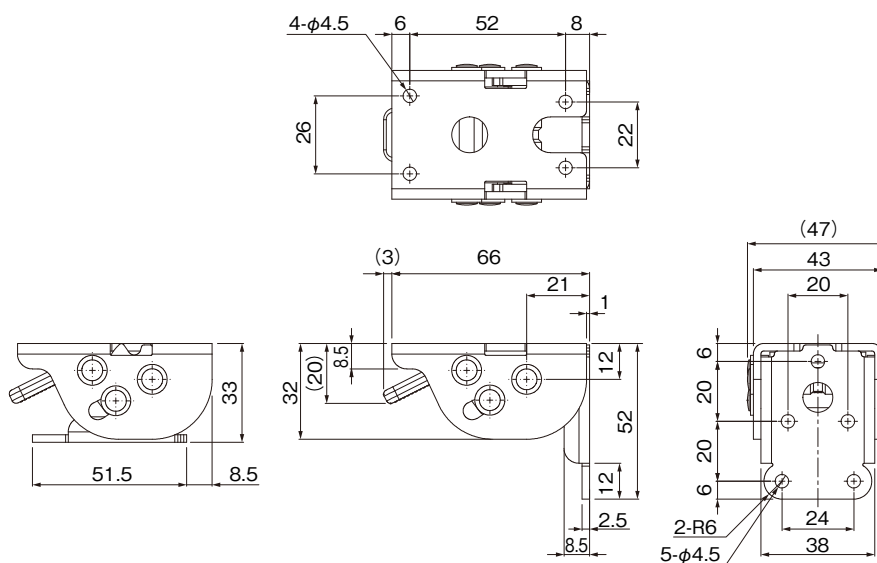
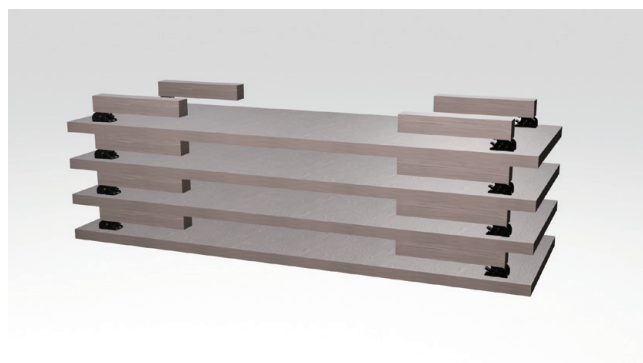
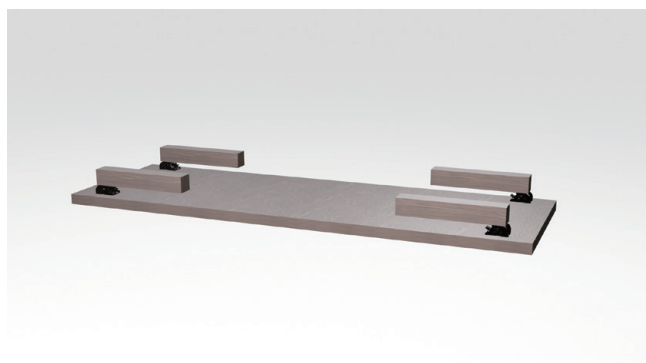
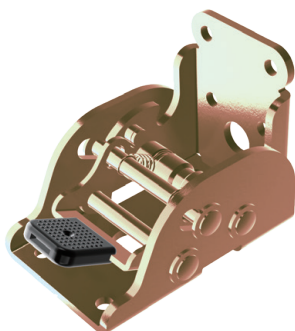
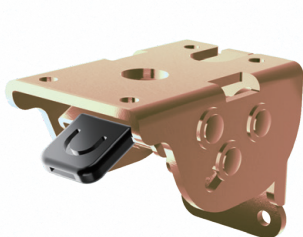


B215 Folding legs metal fitting PAT.P

Under development



- This product has the long life because of the new system compared to the conventional folding leg metal fitting.
- Also can install to thin legs because of downsizing.
- Leg can be locked when both of using table and storage.
- Recommended leg/ Minimum: Up to 38mm × H300mm
- Material/ Steel
- Finishing/ Black zinc · Chromate
- Recommended screw/ $\Phi 4$ pan · truss
- Quantity/100 pcs



Kojima METAL FITTING CORPORATION

Head office

3-4-1 Motoasakusa, Taito-ku, Tokyo 111-0041, Japan

TEL +81-3-3843-3141 FAX +81-3-3843-3144

Kasukabe branch

1-26-20 Kasukabehigashi, Kasukabe-shi, Saitama 344-0062, Japan

TEL +81-48-760-3881 FAX +81-48-760-3883

✉ kojima_global@kojima-mf.co.jp

