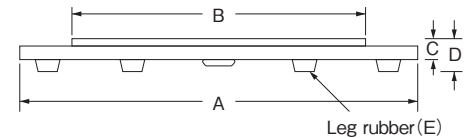
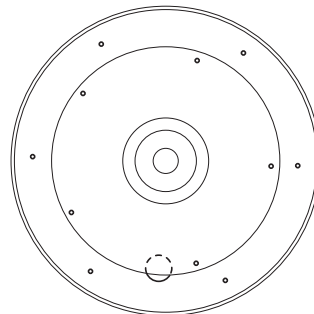


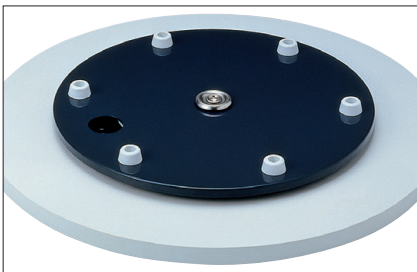
C101 Turntable (for middle & light)



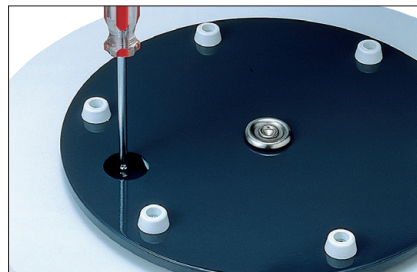
- Can use for chinese turntable, TV stand and be applied for turning display such as craft
- The body is made of steel by high technology. Turning part uses plastic special roller and shaft part uses steel ball bearing
- Features are quiet rolling and smooth movement even on unbalanced disk. It doesn't dirt table cloth or mat
- Material/Steel
- Finishing/Gray
- ※ Diameter of table top is rough indicated 1.5 times of A dimension of turntable in case of using for chinese table (580W is 1.9 time of A dimension)
- ※ Number of load capacity in the chart is result getting ordinal things on. Don't put sudden impact!



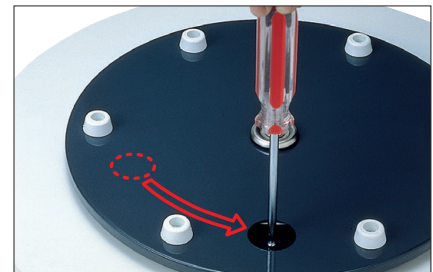
Installation process



1. Put turntable in the middle of table top



2. Find blind holes turning holes for screws and fasten with wooden screws



3. Repeat the work 2. and fasten turning table and table top with wooden screw

Specification dimension

Unit : mm

Product number	A	B	C	D	E		Screw hole		Self-weight (kg)	Load capacity (kgf)	Table top (rough indication) ϕ	Quantity	
					Quantity (pcs)	Outer diameter	Height	Diameter					Quantity (pcs)
C101-240	240	175	15.0	28.5	5	24	13	4.3	4	0.8	30	360	10pcs
C101-300	300	240											
C101-380	380	300	15.5	30.5	6	29	15	6	2.3	80	600	5pcs	
C101-450	435	335											
C101-580	580	435	25.0	40.0	12				5.7	100	900	3pcs	
C101-580W		580											
C101-850	850	580							7.1		1,100	2pcs	
									12.5		1,300		

Kojima METAL FITTING CORPORATION

Head office 3-4-1 Motoasakusa, Taito-ku, Tokyo 111-0041, Japan

TEL +81-3-3843-3141 FAX +81-3-3843-3144

Kasukabe branch 1-26-20 Kasukabehigashi, Kasukabe-shi, Saitama 344-0062, Japan

TEL +81-48-760-3881 FAX +81-48-760-3883

✉ kojima_global@kojima-mf.co.jp

