

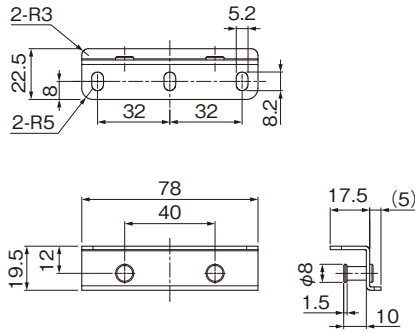
N424 Double opening cable management metal fitting



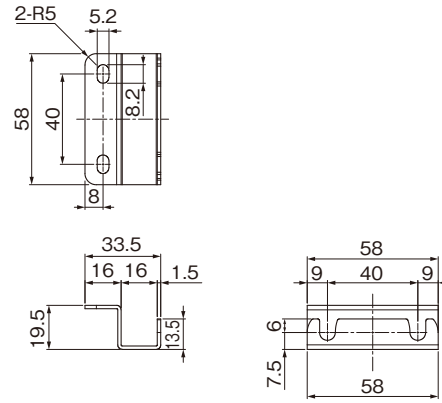
- Possible to customize the covers
- Possible to open to both ways
- Material/Steel
- Finish/Black baked paint
- Recommended installing screw/Truss 5mm
- Quantity/ 100 sets



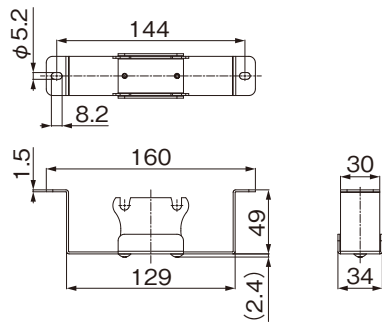
Hinge



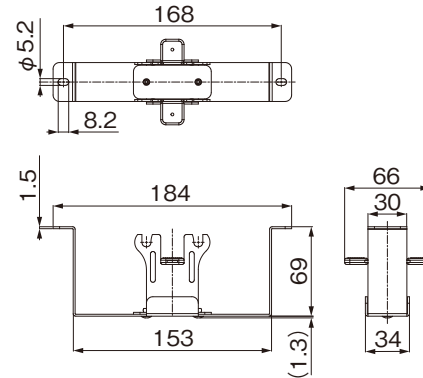
Side bracket



Center bracket S

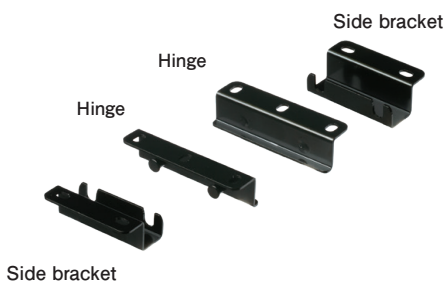


Center bracket W



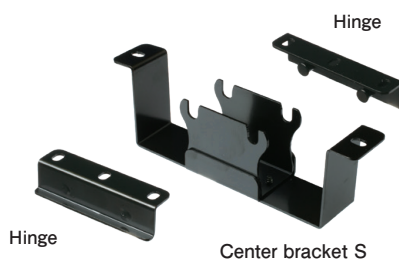
Combination example

N424-SB
Side bracket set



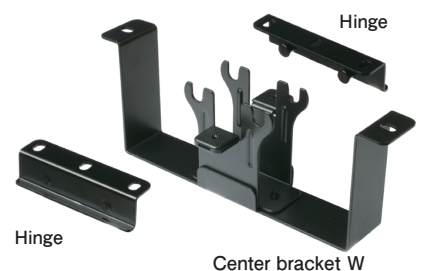
【Hinge 2 pcs, Side bracket 2pcs】

N424-CB-S
Center bracket S set



【Hinge 2 pcs, Center bracket S 1pc】

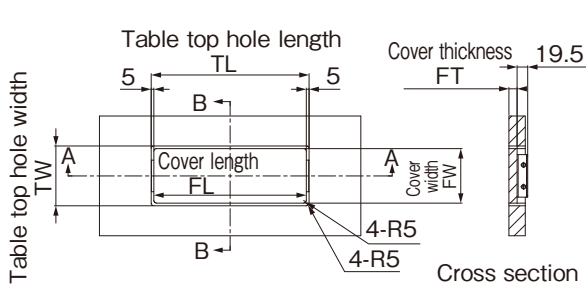
N424-CB-W
Center bracket W set



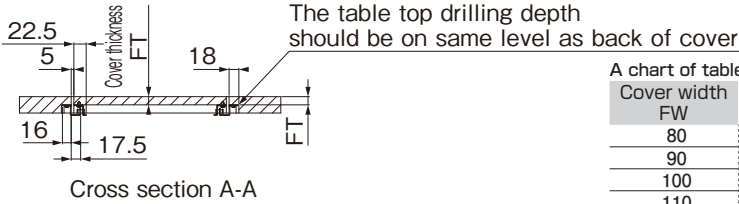
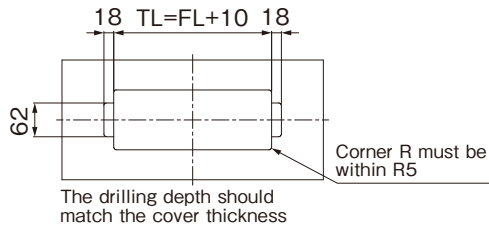
【Hinge 2 pcs, Center bracket W 1pc】

Installation dimension drawing

Single installation example N424-SB 1 set used



Making holes on underside of the table top & drilling dimension



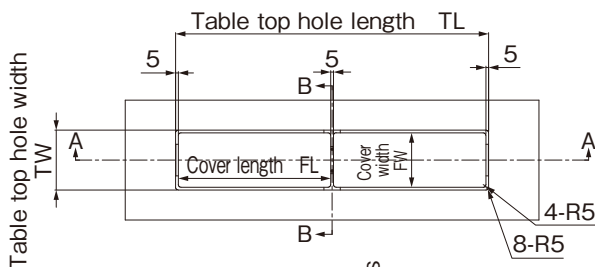
A chart of table top hole width by cover width (FW) & thickness (FT)

Cover width FW	Table top hole width TW(FT=15)	Table top hole width TW(FT=20)	Table top hole width TW(FT=25)
80	more than 110	more than 118	more than 126
90	more than 116	more than 124	more than 132
100	more than 124	more than 130	more than 138
110	more than 132	more than 138	more than 144
120	more than 140	more than 146	more than 152
130	more than 148	more than 154	more than 160
140	more than 156	more than 162	more than 168

Ex) Table top hole width (TW) is more than 130 in case of cover width (FW) is 100, cover thickness (FT) is 20.
* If TW is 132mm or more, the dedicated back cover (bracket) cannot be installed

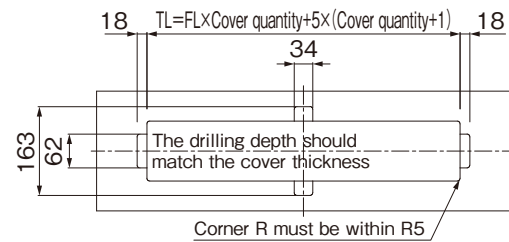
Example of continuous installation (cover width up to 100mm) 1 set of N424-SB-W used

*In case of many consecutive wiring holes, add N424-CB-S



Cross section B-B

Making holes on underside of the table top & drilling dimension



Ex) 2 sheets of cover length FL 280, 3 points of gap 5
TL=280x2+5x3=575

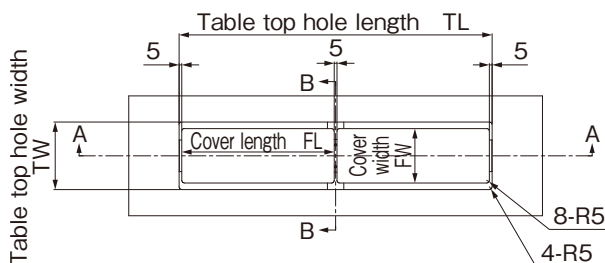
Chart of table top hole width by cover width (FW) & thickness (FT)

Cover width FW	Table top hole width TW(FT=15)	Table top hole width TW(FT=20)	Table top hole width TW(FT=25)
80	110 ~ 125	120 ~ 125	125
90	120 ~ 125	125	-
100	125	-	-

Ex) Table top hole width (TW) is 125 in case of cover width (FW) is 90, cover thickness (FT) is 20.

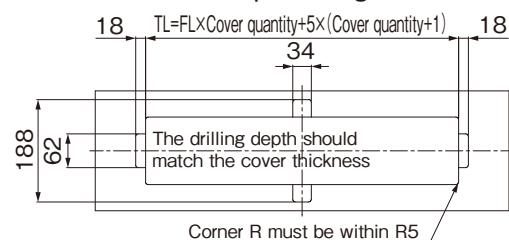
Example of continuous installation (cover width up to 100mm) 1 set of N424-SB-W used

*In case of many consecutive wiring holes, add N424-CB-W



Cross section B-B

Making holes on underside of the table top & drilling dimension



Ex) 2 sheets of cover length FL 280, 3 points of gap 5
TL=280x2+5x3=575

Chart of table top hole width by cover width (FW) & thickness (FT)

Cover width FW	Table top hole width TW(FT=15)	Table top hole width TW(FT=20)	Table top hole width TW(FT=25)
80	110 ~ 160	118 ~ 160	126 ~ 160
90	116 ~ 160	124 ~ 160	132 ~ 160
100	124 ~ 160	130 ~ 160	144 ~ 160
110	132 ~ 160	138 ~ 160	152 ~ 160
120	140 ~ 160	146 ~ 160	160
130	148 ~ 160	154 ~ 160	-
140	156 ~ 160	-	-

Ex) Table top hole width (TW) is 130 in case of cover width (FW) is 100, cover thickness (FT) is 20.

N425 Wiring brush

● Can be used to conceal wirings of office equipment



N425-HSS



N425-A1



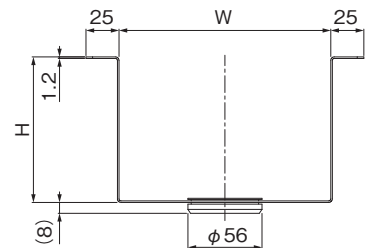
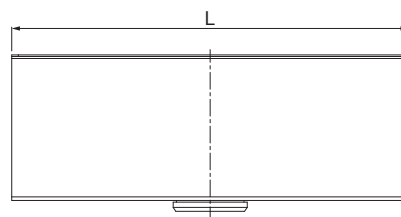
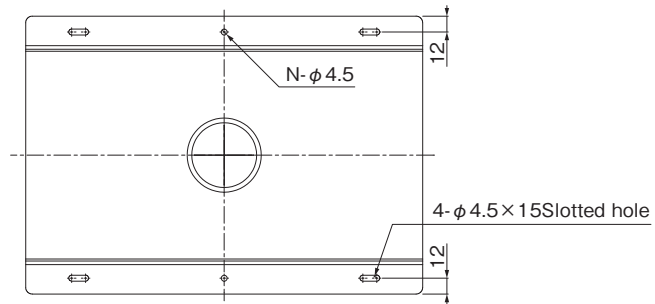
N425-H825

N522 Cable tray

● Can manage cables



N522-160 x 300-R



Product number	W	L	H	N	Grommet	Quantity
N522-160 x 300	160	300	110	2	None	30 pcs
N522-160 x 300-R					Attached	
N522-200 x 400	200	400	100	4	None	
N522-200 x 400-R					Attached	

※ Please contact our staff for details

KOJIMA METAL FITTING CORPORATION

Head office 3-4-1 Motoasakusa, Taito-ku, Tokyo 111-0041, Japan
TEL +81-3-3843-3141 FAX +81-3-3843-3144

Kasukabe branch 1-26-20 Kasukabehigashi, Kasukabe-shi, Saitama 344-0062, Japan
TEL +81-48-760-3881 FAX +81-48-760-3883

<https://www.kojima-mf.co.jp/english/>

✉ kojima_global@kojima-mf.co.jp

Website

