

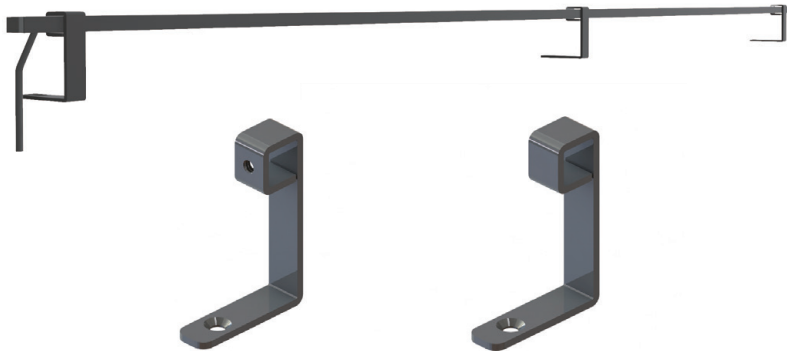
# Q503 Square fall blocking LED Specification



- 9mm square sharp designed fall blocking
- Available to put LED tape light
  - \*LED tape light is not included
- There are also end-caps
- Available to use LED tape light less than 5mm width
- Finishing/ Black baked paint
- Recommended screw/ 3.5mm flat head screw

※Be careful of handling, because black baked paint is visible scratches

※Q503-F is fixed. Tighten fixing setscrew using Q901-2 hex wrench to fix square pipe



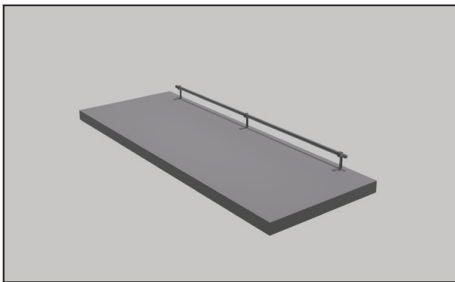
Q503 Square fall stopper

## Specification dimensions

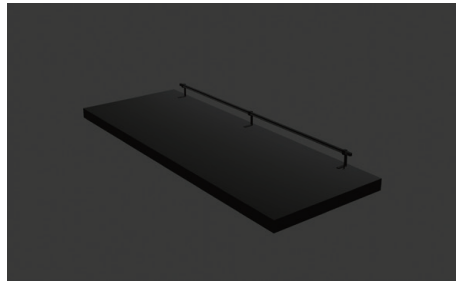
Unit : mm

Product number	Material/Finishing	Product content	Quantity
Q503-C	Steel/Black baked paint	Flexible movement	200
Q503-F		Fix	
* Q503-K-1000	Aluminum/Black baked paint	9mm U-shaped L1,000	100
* Q503-K-ROCK	Aluminum/ Silver	U-shaped -type	
Q503-9-EC	PE/Black	End cap	200
D901-2	Steel/Material (Black)	Hex wrench	500

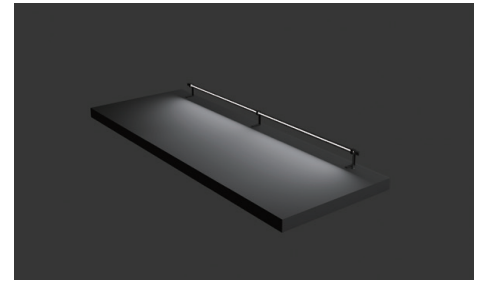
\* Made-to order product



Date time (Bright room)

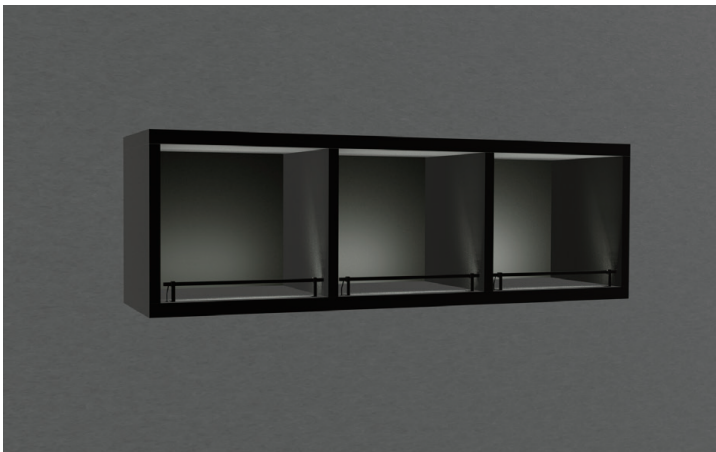


Night time (Dark room)



Night time (Dark room)

## Image pictures



## How to install

\*Cut Q503-K-1000 and LED into required size before pasting

The technical drawing shows a table with a yellow top and a black frame. The side view on the left shows the table's profile, including the legs and the top surface. The top view on the right shows the table from above, highlighting the rectangular top and the central support structure. The drawing is a simple line art with a yellow fill for the table top.

Put Q503-V Flexible movement/Q503-F Fix  
through the above product  
While, set Q503-K-ROCK inside of Q503-F Fix

Diagram illustrating the components of the Q503-K-ROCK installation:

- Set screw
- Q503-K-ROCK
- Q503-K-1000
- Q503-F-Fix

While, be careful that Q503-K-ROCK doesn't scratch LED or power coil

\* Should be less than 5mm of LED or power code where you use Q503-K-ROCK

<p><b>Q503-CFlexible to move</b></p>	<p><b>Q503-F Fix</b></p>	<p><b>Q503-K-1000</b></p>
<p><b>Q503-9-EC End cap</b></p>	<p><b>Q503-K-ROCK</b></p>	<p><b>Q503-K-ROCK</b></p>

\*Note Kojima doesn't sell LED tape light for square fall blocking



Product name LED tape light

## Product dimension



※There is a joint part in the middle of 1mm length LED such as left picture

## Feature

- Available to adjust cutting by scissors
- Can choose color (Lamp color & daylight color)
- There are a switch and a dimmer as option

Ask the dealer for details

Dealer

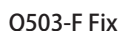
Trust Technology

TEL 03-3835-7887

Website <http://jtt.ne.jp/shop>



## K2



- ※Be careful of handling, because black baked paint is visible scratches

Q503-F Fix      Q503-C Flexible to move      Q503-9-800 9mm Square pipe      Q503-F Fix

## Unit : mm

Product number	Material/Finishing	Product content	Quantity
Q503-C	Steel/Black baked paint	Flexible to move	200
Q503-F		Fix	
Q503-9-800		9mm Square pipe L800	100
Q503-9-1500		9mm Square pipe L1,500	
Q503-9-EC	PE / Black	End cap	200
D901-2	Steel/material (black)	Hex wrench	500

Diagram illustrating the components of a shelving unit:

- 16mm Square:** Vertical support structure.
- 9mm Square:** Horizontal runner or shelf support.

The diagram shows two types of window frames. On the left is the G326-S (Standard) frame, which is a simple rectangular frame with a single horizontal divider. On the right is the G326-M (Medium) frame, which is a rectangular frame with two horizontal dividers, creating three equal sections.

<p><b>Q503-C Flexible to move</b></p>	<p><b>Q503-F Fix</b></p>	<p><b>Q503-9-800    Q503-9-1500</b></p>
<p>Accessory: 4 steel hex hole stopper screws × 4 black material × 1 ※Hex wrench is sold separately</p>	<p>Accessory: 4 steel hex hole stopper screws × 4 black material × 1 ※Hex wrench is sold separately</p>	<p><b>Q503-9-EC End cap</b></p> <p><b>D901-2 Hex wrench</b></p>

